



ESTABLISHED 1929

Gosfield School

Prospectus

A Co-Educational Independent Day School



Nursery - Prep - Senior - Sixth Form

The history of Gosfield School

Originally built in the early 1800s, Cut Hedge Mansion was later bought and developed by the textile manufacturer, George Courtauld. The development work included the purchase of the surrounding land which provides the considerable 110 acre parkland we still enjoy today.

George's daughter, Constance Cicely Courtauld, purchased the property from the executors of her father's estate in 1929 and it became an all-boys' boarding school. In 1944 Constance gifted the buildings and the estate to the Headmaster of Gosfield School, Mr John Turner. In 1967 Gosfield School became a charitable trust.



The complete educational experience

Gosfield School is an independent, co-educational through school delivering a consistent and supportive learning environment for children from 2 to 18 years old. Pupils throughout the school benefit from our fine facilities and age-appropriate specialist teaching, taking each educational transition in their stride.

Small by design

With an average of 15 pupils to a class across Prep and Senior, our small class sizes enable every member of staff to understand each pupil individually. We aim to provide an environment where all pupils feel valued and able to achieve personal excellence in all aspects of life.

The chance to flourish

Children do not learn unless they are happy, so making sure that each child who joins us feels safe, settled and supported, is our primary priority.

We believe that children will flourish if they are allowed to grow at their own pace, which is why our pupils mix often and readily across the year groups. This builds the confidence of our youngest children and helps our older pupils remain kind and caring throughout their teenage years. We get to know each of our pupils very well and appreciate their unique personalities and approaches to learning.

Our Mission

To provide an environment where all pupils feel valued and able to achieve personal excellence in all aspects of life.

Mr Rod Jackson Principal of Gosfield School

Mr. Jackson became Principal of Gosfield School in September 2021. He has a wealth of experience, having spent more than 30 years working in independent schools in Africa, Australia and the United Kingdom. He is a passionate promoter of an entirely holistic approach to education in which a rigorous approach to academic education, an outstanding programme of extra-curricular opportunities alongside excellent pastoral care and personal development combine to create a world class educational experience for each child. Mr. Jackson believes that it is essential not only that we educate our pupils to be global citizens but that we ensure they have the skills and the desire to change the world for the better, as future leaders.

Before joining Gosfield, Mr. Jackson served as Head of The International Community School in Marylebone and prior to that he was Head of Secondary at The King Alfred School in Hampstead, earlier leadership roles include Head of Classics at Cranleigh School and Senior Housemaster at Aldenham School. Mr. Jackson holds a BA [Hons] degree in Classics from the University of Adelaide and a MEd from the University of Cambridge.



Being a part of a through school

Gosfield School is a happy and purposeful community in which we can all aspire to be our best, knowing that our achievements will be celebrated and our talents nurtured. We offer all our pupils as many opportunities as possible for academic progress, social and physical development, creative expression, collaboration and leadership.

Caring for each other

Our pastoral care programme is about looking after all of our pupils so they can lead fulfilling and balanced lives at school and beyond; it is about helping pupils understand how to look after themselves and others. We encourage all pupils to seek support and advice when they need it. Pastoral care underpins personal development. A strong pastoral care system, together with family life, helps pupils to build self-esteem and feel valued.

The House system

Our House system is at the heart of our through school. We firmly believe that this system leads to positive relationships and great consideration of everyone throughout the school. All pupils from the Nursery to Sixth Form belong to one of three Houses:

- Nevill (Blue)
- Tudor (Red)
- Woodstock (Green)

All pupils have the chance to contribute towards House points. During the year there are various activities to test different skills and encourage friendly rivalry between Houses. Activities include Sports Day, House camps and weekly House-led assemblies and activities. Siblings are always placed within the same House.

Wellbeing

Throughout the academic year we run a number of enrichment and cross-curricular days for pupils. These days are based on themes and are designed to get pupils to work outside their traditional groups and with a variety of teaching staff. These experiences help our pupils to broaden their intellectual experiences, develop their independent learning, exercise team-building skills and consider the curriculum from a different perspective.



Our services

- School buses to provide easy transport options
- Wrap-around care for all pupils
- A full extra-curricular programme

Celebrating achievements

During the final week of the Summer Term, Speech Day enables us to celebrate the year's achievements. From the Junior Music Cup to the whole school Merit Cup, we recognise pupils for their effort and service to the School as well as their prowess in all areas. It is also the time for our School Captains to give their valedictory speeches and officially hand over responsibility to their successors. It is one of the most important events in the school calendar and family members are always welcome to take part in the experience.

Leadership skills

We provide a variety of leadership roles throughout the school including:

- School Council representatives
- Prefects
- Senior House, Sports and Vice Captains
- School Captains
- Pupil Parliament
- Gosfield Green Team

Pupils undergo training sessions to develop their leadership skills and empower them with the confidence to undertake their roles of responsibility appropriately.



Enabling us to achieve

Our Senior building is an elegant 19th century house providing pupils with a friendly and intimate learning environment. Classrooms have been refurbished and added to provide modern learning facilities including an ICT suite, an Art studio, Design Technology workshop and exceptional Food Technology room. Many areas within the Senior building are shared with our younger children providing all pupils with a constant reminder of our through-school ethos.

Our custom-built Prep School, Meadow Court, was opened in 2015 and provides a nurturing learning environment for children from our Nursery through to Year 5.

Each classroom benefits from the latest technology and wireless connectivity as well as outdoor learning areas, enhancing pupil progress and enabling lessons to take place inside and outside the classroom. With an academic focus on Literacy and Numeracy, pupils also follow a creative curriculum, including modern languages and performing arts, and have access to the most up-to-date learning materials for school work and homework.

Forest School

The philosophy of Forest School is to encourage and inspire individuals of any age through an innovative, long-term,



An environment to inspire learning

We are extremely fortunate to have such a beautiful setting for our pupils to experience. Our 110-acre private, rural parkland setting is key to helping us deliver our overall educational experience.

educational approach to outdoor play and learning in a woodland environment. Cub Wood is our own unique Forest School space and is cared for and protected by children from our Nursery through to Year 9. From Year 9 we provide pupils with the opportunity to take part in the Duke of Edinburgh Award Scheme, building on the skills and collaborative approach they have acquired through outdoor learning.

Sporting facilities

Our facilities include a fully equipped Sports Hall, an all-weather sports surface, football, rugby, hockey and cricket pitches, athletics tracks and cross-country courses.

We provide all pupils with a full and varied sports programme holding a Grays Flagship School status. Alongside our own PE Department, we work with a number of external partners including Football, Cricket, Tennis and Running coaches.

Parkland setting

Our outdoor space is utilised throughout the school day from early morning cross-country running clubs to a full and varied extra-curricular activity programme including Gardening Club, Archery, Fencing and Horse Riding. Our grounds provide something for everyone.

Our annual Cut Hedge Trophy cross-country competition, Forest School, muddy runs and overnight camps are just a few of the ways our pupils, staff and the wider community make the most of our beautiful facilities.



At a glance

- An environment designed to help us achieve
- Beautiful parkland views from all classrooms
- Modern learning areas and new technologies
- Exceptional sports facilities
- On-site Forest School

A young girl with dark hair, wearing a grey school jacket over a patterned shirt and a green tie, is focused on writing in a notebook. In the background, another student in a red school uniform is partially visible.

A love of learning

A rich and varied curriculum

We aim to deliver a curriculum which meets the needs of all our pupils in a manner that stimulates, excites and encourages them to question and enjoy the opportunities available to them. We believe every pupil is entitled to a curriculum which is rich and varied, challenging and inspiring, helping them to reach their potential and fully equipping them to pursue their future goals.

Monitoring academic performance

Considerable emphasis is placed upon academic progress and success, though it is important that as much attention is given to those who find the work challenging as to the more able. Staff monitor academic performance, are aware of the potential of their pupils and are dedicated to ensuring that they achieve it. Pupils are always expected to give their best and are encouraged to develop their natural talents to the full.

Modest results for pupils who may find academic work challenging are as worthy of recognition as outstanding results for others who may be academically gifted. We pride ourselves on the excellent progress our pupils make.

Measuring what matters

Assessing pupils within our school is vital to ensure they are progressing appropriately and meeting the high expectations set. Pupils' work is marked and assessed on a regular basis in line with the Whole School Policies on Assessment and Marking.

All pupils undertake computer-based tests set by The Centre for Evaluation and Monitoring at Durham University. Computer-adaptive assessments fit perfectly into a philosophy that seeks to support each child as an individual, overcoming some of the shortfalls of more traditional testing methods. All individuals are challenged at a level tailored to them, resulting in an experience which is motivating and enjoyable.

Homework expectations

For all pupils the purpose of homework is:

- To reinforce, support and help in the understanding of work covered in class
- To enable completion of courses in sufficient depth and breadth
- To develop independent study skills, including research and revision
- To enable pupils to establish a routine for study

At a glance

- Small classes to monitor progress closely
- Regular computer-adaptive assessments
- Complementary homework planning
- Constant guidance and support

Nursery

Our purpose-built nursery rooms and outside area are located in Meadow Court. The Nursery is supported by the same robust learning structure as the rest of our Prep School. Children from the age of 2 to 4 years have the opportunity to take advantage of teacher-led planning expertise.

At a glance

- Teacher-led
- Forest School
- Extended hours of care
- Priority admission to Reception

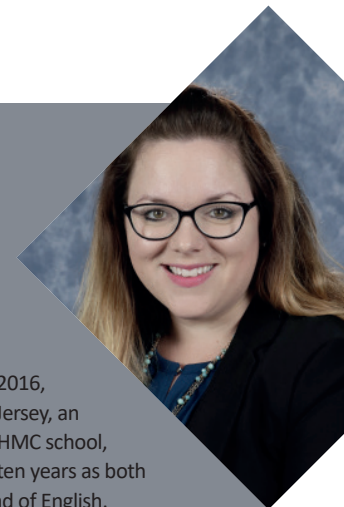
Head of Prep and Nursery

Mrs Bougeard joined the school in January 2016, from Victoria College Jersey, an all-boys independent HMC school, where she served for ten years as both Housemaster and Head of English.

Mrs Bougeard has held pastoral and academic leadership positions in the past and believes in raising pupils' academic achievement while also promoting the growth and personal development of the entire child. She encourages each pupil to flourish at their own pace, developing their natural talents and gifts.

Mrs Bougeard has made a considerable academic contribution to the school since she joined, including successfully leading the remote learning programme. She is dedicated to fostering a culture of celebration and success in addition to promoting a "can-do" attitude and a competitive House events culture in the areas of Music, Art, Sport, and Drama.

Mrs Bougeard holds a BA (Hons) degree in English Literature as well as a PGCE qualification with QTS, both from the University of the West of England, Bristol.



New beginnings

Subject specialist lessons

We use a creative approach to teaching and learning, using topics such as ‘All About Me,’ ‘Farms,’ as a starting point but then follow the children’s interests.

As we are a through school, we have the expertise of subject specialist teachers on hand and our Forest School sessions are run by a qualified and experienced Forest School Leader.

Healthy eating and fresh ideas

We provide a cooked lunch. Water and snacks are accessible at all times.

Our menu is designed to encourage healthy eating, with plenty of fresh fruit and vegetables. Healthy eating is not just about what we put on the plate, it is about educating the children and giving them the knowledge and independence to make healthy choices that will stand them in good stead for the future.

Nursery Activities

Throughout the day children have free flow play with adult-directed activities, developing early skills in Literacy, Numeracy and Creative Learning.

Children are introduced to Phonics in the year before they move to Reception. A timetable is in place to ensure the children have a rich variety of child-led learning opportunities together with plenty of room for creative learning and play-based investigation.



Nursery to Reception Loyalty Fee Reduction

The Loyalty Fee Reduction is available to parents with children in our Nursery who will be moving through to the Reception Class in our Prep School. The level of discount will be determined by the point at which a child joins our Nursery and registers for the loyalty scheme by paying the £50 registration fee and £250 non-refundable Loyalty deposit. Upon entering our Reception Class, the £250 deposit will form part of the school’s standard £500 deposit with the additional £250 due the month before the child starts in Reception. The loyalty fee reduction will be applied to fees from Reception up to and including Year 2.

Important skills

In preparation for the transition to school, our Nursery programme provides children with the chance to develop core physical, social and verbal skills as well as creating the foundations for a love of learning.

Moving up to Reception

At Gosfield School, the transition of children from Nursery to Reception and on to Year 1 is managed with a fully connected approach. Our children experience a smooth progression from one stage to the next, ensuring that the pace and quality of learning are maintained and that all children continue to make progress in their learning journey.

Nursery Hours

Drop-off is from 8.00am with the last pick-up being 5.00pm.

Nursery Hours:

Full Day Session: 8.00am -5.00pm

Morning Session: 8.00am - 1.00pm

Afternoon Session: 1.00pm - 4.00pm

Late Session 4.00pm: - 5.00pm



Prep School Reception, Years 1 and 2

For children aged 4 to 6 years old we have a robust and stimulating learning programme which makes the most of our indoor and outdoor teaching facilities. With classes averaging 20 per year group we can provide children with the opportunity to develop at their own pace in a supportive and nurturing environment.

At a glance

- Baseline testing to assess natural learning ability
- A robust and fully-adaptable literacy and numeracy programme
- Subject specialist lessons
- Weekly Forest School
- Daily extra-curricular activities
- Personal/Independent Music Lessons with specialist Peripatetic Music Teachers

The Early Years

Our academic framework

All children receive at least an hour of Literacy and Numeracy every day, with additional phonics-based lessons. Our robust academic framework is fully adapted to meet the needs of the most and least able children, allowing us all to monitor clearly and reward learning success at every level.

In addition to English and Maths, we offer a range of subjects including Forest School, Spanish, Science, Computing, Drama, Geography, History, RE, PSHE and Music to enrich learning further.

Taking a creative approach

A topic-based method is used for curriculum subjects including Science, History, Geography, Religious Studies and PSHE.

We use a creative approach to learn more about our chosen topics, ‘Mini beasts’, ‘Space’, ‘Traditional Tales’ and many more. Our Forest School setting is critical in helping us to inspire and encourage further investigation and exploration of these topics as well as develop vital team building and risk assessment skills.

Parental communication

In our Nursery and Reception Class, parents are able to view their child’s progress through a shared online journal which is used to record and monitor development and learning and to celebrate progress. We encourage families to use this learning tool to share experiences outside of the school setting.

The primary method of daily communication between parents and staff from Year 1 onwards is a Pupil Planner, given to children at the beginning of each academic year. We believe in being fully open and transparent about your child’s learning journey so we can work in partnership to ensure their happiness and wellbeing.

Being part of a through School

As part of a through school all children mix together regularly from the age of 2 to 18 years old. From Reception age, and when the children are ready, they will attend whole school assemblies and take part in our weekly House Activity time. They will also represent their House at our annual Sports Day and in other creative activities, helping to develop core physical and team working skills.



Subject summary

Core subjects
<div><div>- Literacy</div><div>- Numeracy</div><div>- Phonics</div><div>- Topic-based Creative Learning</div><div>- Science</div><div>- Religious Education</div><div>- History</div><div>- Geography</div></div>
Specialist subjects
<div><div>- Forest School</div><div>- PE including swimming</div><div>- Computing</div><div>- Music</div><div>- Performing Arts</div></div>
Homework expectations
<div><div>- Nightly home reading (All)</div><div>- Two pieces per week (Years 1 & 2)</div></div>
Extra-curricular activities
<div><div>Available Monday to Thursday from 4.00pm to 4.45pm.</div><div>Examples:</div><div><div><div>- Lego</div><div>- Chess</div><div>- Nature Art</div><div>- Construction</div></div><div><div>- Dance</div><div>- Multisports</div></div></div></div>
<div>Activities change each term. Visit our website for an up to date list.</div>

Prep School Years 3 to 6

Children from the age of 7 to 11 experience a challenging and varied curriculum designed to help them develop more of the skills they need to progress to Senior School and beyond. With weekly Forest School and a broad and balanced extra-curricular programme we give all children plenty of opportunity to use existing skills and develop new ones.

At a glance

- Challenging and varied curriculum
- Early identification of more able pupils
- Weekly Forest School
- Subject specialist lessons
- A broad and balanced extra-curricular programme
- Private music lessons



Rising to the Challenge

Continuous development

Daily Literacy and Numeracy lessons continue with more able children being supported to stretch their learning above and beyond their current year group.

Subject specialisation

A topic-based method is being introduced for Computing, Music, PE and Games, Design Technology and Food Technology. Specialist teaching for Verbal Reasoning is introduced in Year 3 and Science taught by a specialist subject teacher in Year 5

Measuring what matters

Assessing children within our school is vital to ensure they are progressing appropriately and meeting expectations.

All pupils from Early Years to Year 6 undertake computer-based tests within the first few weeks of every new academic year. The system helps us to identify a child's strengths and areas for development, spot high fliers or those who may need additional support.

Thriving with change

As with all stages of learning we believe children should thrive through change rather than be daunted by it.

Our Year 6 Class are based within the Senior School, giving children the opportunity to access a greater range of subject specialist teachers and classrooms. Being located in the Senior School helps them to become more independent learners.



Subject summary

Core subjects

- Literacy
- Numeracy
- History
- Geography
- Religious Education

Specialist subjects

- PE to include regular fixtures
- Spanish
- Science
- Music
- Performing Arts
- Verbal Reasoning
- Design Technology
- Food and Nutrition

Homework expectations


- Nightly home reading (All)
- Four pieces per week (Year 3 & 4)
- Six pieces per week (Years 5 & 6)

Extra-curricular activities

Available Monday to Thursday from 4.00pm to 4.45pm and selected lunchtimes. Examples:

- Netball
- Chess
- Football
- Bushcraft
- Bee keeping
- Fencing
- Dance
- Creative Writing
- Horse riding

Activities change each term. Visit our website for an up to date list.



Senior School Years 7 to 11

Our Senior School is designed to deliver tailored learning experiences. Each class has an average of 17 pupils. This enables us to teach the core curriculum of subjects at a number of different levels, typically focusing on a group of 10-15 pupils. Every pupil gets individual time and support from the teacher which in turn creates a strong relationship and builds trust.

At a glance

- Small and focused classes to challenge and support every pupil
- No academic entrance tests
- A history of consistently strong GCSE results
- A broad extra-curricular activity programme
- Educational enrichment opportunities

Creating your future

Years 7 to 8

The curriculum is designed to engage and challenge all learners, and our pupils thrive in small classes with specialist teachers.

We focus on securing the foundations in core, creative and practical subjects leading towards GCSE selection. We also provide a number of enrichment and cross-curricular opportunities to enable children to develop new skills and work with pupils outside their normal daily lessons.

Years 9, 10 and 11

As our pupils reach the end of Year 9, their education takes on a different format, leading to national examinations at GCSE level.

We have no pre-determined Option columns which allows us to shape columns based on pupil selection. We provide each pupil with a course of study which offers both breadth and balance whilst enabling all pupils to gain the appropriate qualifications for their post-16 education and career paths.

The curriculum in Years 10 and 11 has been constructed broadly to follow National Curriculum guidelines and to a child's academic potential, whilst retaining as much opportunity for choice as possible. The whole curriculum is far more than

the formal timetable. The many other experiences that are available at Gosfield School are very important to the all-round development of each pupil within our community.

Careers advice

We provide expert advice and practical assistance on careers and further education opportunities as pupils begin to consider seriously what their future may hold. Our work placements give pupils an opportunity to support their personal and social development by gaining experience of and insight into the world of work.

Homework expectations

A homework timetable is set at the beginning of the year and is adapted to the pupil's individual ability.

A maximum of three pieces of homework are set for any one night, with the exception of the weekend when there may be four.

To support exam preparation extra-curricular activities provide 'top-up' classes and revision time with the support of the subject teachers.



Subject summary

Core subjects

- Mathematics
- English Literature
- English Language
- Science (Double or Triple Award from Year 10)

Specialist subjects

Additional specialist subjects Year 7 to 8	Additional specialist subjects Year 9 to 11
<ul style="list-style-type: none">- History- Geography- PE- Art- Music- Drama- Computing- PSHE- Food Technology- Forest School- Design Technology- Spanish and French- Religion, Ethics and Philosophy- Politics	<ul style="list-style-type: none">- PE Studies- Business

Extra-curricular activities

Available Monday to Thursday from 4.00pm to 4.45pm and selected lunchtimes. Examples:

- Film Club
- Horse Riding
- Art Club
- Duke of Edinburgh
- Cricket Coaching
- Supervising Prep
- Netball
- Badminton
- Rugby
- Debate Club

Activities change each term. Visit our website for an up to date list.

Specialist areas



Art

Our Art Studio provides a panoramic view of our grounds to inspire our young artists. Art is for everyone at Gosfield. We encourage pupils to explore all forms of Art from painting, line drawing and working with clay and textiles to using IT programmes and photography.

Our House system includes a number of art challenges including the extremely popular House Doodle competition. Enrichment and Cross-Curricular Days often encompass Art-based activities.

A number of our pupils present very successfully each year at the Independent Schools Association Art Competition and some wonderful, highly skilled pieces are created by our GCSE and A Level pupils.

We are always very proud of the work produced and take every opportunity to



display it around the school.

Art Scholarships may be awarded to pupils in Years 7 and Year 12 who demonstrate exceptional artistic ability and who show a passion and commitment towards this subject area.

Sport

All pupils are given the opportunity to participate in a wide range of sports and compete for the school in regional and national competitions, local leagues and regular fixtures.

Rugby, football and cricket are the primary team sports for senior boys, who also participate in cross-country and athletics. Senior girls regularly compete in hockey and netball fixtures as well as at regional and national cross-country and athletics competitions. Pupils are introduced to indoor sports, including badminton, basketball and trampolining.

Our senior extra-curricular programme provides early morning and lunchtime fitness options as well as a variety of physical activities for after school.

Sports Scholarships may be awarded to individual pupils in Years 7 and Year 12 who demonstrate exceptional sporting ability and will show commitment and enthusiasm in all aspects of school life.

We are fully supportive of pupils who compete offsite at an elite level, providing study plans and catch-up lessons.

Performing Arts

Performing Arts encourages our pupils to work collaboratively, growing in confidence and thoroughly enjoying their time together. Our goal is to make music, singing, dancing and drama accessible and enjoyable to all.

Throughout the school year there are a number of performances from small music soirées and Christmas and Easter Concerts to full musical productions for both Prep and Senior pupils. Performing Arts is also a regular feature of our Enrichment and Cross-Curricular days.

Our extra-curricular activity programme offers a daily Performing Arts option including a whole school Samba Band and Senior Rock Band. We have a full complement of peripatetic teachers who teach a range of instruments and singing and provide drama coaching.

Music Scholarships may be awarded to selected pupils in Years 7 and Year 12 who demonstrate exceptional musical ability in at least two instruments (with voice as an option). Pupils who receive a Music Scholarship are expected to act as enthusiastic ambassadors for their discipline.

Academic

These are awarded to pupils joining the School in Years 7-12 and occasionally to exceptional Prep pupils and normally represent from 10% remission on fees. These scholarships are awarded to candidates who have exceptional academic

subject skills who show real evidence of These scholarships are awarded to candidates who have exceptional academic subject skills who show real evidence of potential leadership. Candidates wishing to be considered for an academic scholarship will be asked to submit subject specific school reports and a portfolio reflecting subject achievements and will be interviewed by the Principal.





Senior School Sixth Form

Our Sixth Form is a memorable place to study during the last two years of your school life. As a Sixth Form student you are given a greater level of freedom to plan your studies, work independently, manage your time and stretch yourself academically. For some students this is a challenging time, but they are fully supported in taking this next big step.

At a glance

- A history of excellent A Level results
- Consistent achievement of results needed for first choice university places
- Small class sizes
- Dedicated Sixth Form centre
- Leadership opportunities
- A tailored extra-curricular programme

Becoming a Young Adult

Our small class sizes create the perfect learning environment for our students. The intimate groups enable full participation, giving students the confidence to express their views openly and to debate constructively. This is excellent preparation for university courses where active participation is expected.

Independent study centre

To support working independently, students will be able to enjoy our dedicated sixth form facilities that include quiet study rooms, a spacious lounge and a kitchen area.

Subjects offered

We will aim to offer any subject for which there is sufficient demand. There is a free choice of three or four subjects. We have no pre-determined subject combinations allowing us to support almost all student subject options.

We will also provide support to individuals who may wish to retake selected GCSEs. A complete list of subjects is available on our website.

Entry Requirements

The Sixth Form entry requirement is 5+ GCSEs grade 4 or above with 5s in chosen subject areas. In some subjects (e.g. Maths/ Physics) we may require a 6 or higher and would discuss on an individual basis.

Extra-curricular activities

We have an extremely active social and extra-curricular programme.

Throughout the year students are required to help to organise charity events, such as the 24 hour Gosfield School Indoor Football Marathon and the Senior Prom. Students are also encouraged to volunteer to assist with extra-curricular activities and sports fixtures for our younger pupils.

We offer a range of extra-curricular activities which are tailored to Years 12 and 13 including Food Hygiene and First Aid. All Sixth Form students are ambassadors for the school, as Senior Prefects or House Captains and acting as role models for our younger pupils.

Planning for the future

Many of our pupils will be with us from Reception all the way through to completing their A Levels.

By the time they reach 17 and 18 years old, pupils become much clearer about their plans after Sixth Form with some choosing to go on to university and others deciding to embark upon their careers. Whichever route our pupils choose they are equipped with the strongest subject combinations and tutored to succeed (Our previous School Captains provide two perfect examples of successfully moving onto their chosen fields).





The School Admissions process

We encourage all families to visit our school as often as possible. Our Open Mornings provide you with the perfect opportunity to come and see us and meet staff and pupils. We can also arrange private tours and an appointment with the Principal during term time.

Register for a place

You will need to register your son or daughter for your preferred year of entry. Subject to availability we accept applications for admission to all year groups but places are limited. There is a £100 registration fee which must be paid before a conditional place is offered.

Admission days

An Admission Day at Gosfield School is our version of an entrance test. Our focus is on ensuring that socially your son or daughter will fit well within their year group and will benefit from our teaching and learning experience. An Admission Day forms the basis of any conditional offer given. The most important goal/aim of the day is to enjoy the Gosfield School experience.

Offers follow a successful Admission Day accompanied by a satisfactory Head Teacher's reference and school report. Candidates also take a CEM assessment, either as part of their admission day or on another day following this. This is not a selection criteria, but simply allows us to fully inform families of any extra support

that we feel may be appropriate for their child.

Accepting a place

Once your child has been offered a place you will receive a letter confirming details of the offer. This will include an Acceptance of Admission form along with a fully refundable deposit. This will secure the place.

Scholarships

A number of Scholarships are awarded at the discretion of the Principal.

We offer Awards to children who are able to demonstrate exceptional ability academically, musically, artistically and in all forms of sport. Our Scholars are expected to maintain their high standards of effort and serve as good ambassadors for the School.

Scholarship Awards are considered from Year 3 onwards

You must have received a conditional offer of a place from us before applying for a Scholarship Award. Applicants are invited to attend a Scholarship Trial Day in the academic year prior to admission.





Take a tour

We encourage all families to visit our school as often as possible. Our open mornings, held twice a year, provide you with the perfect opportunity to visit and meet staff and pupils.

We can also arrange private tours and an appointment with the Principal during term time.

 Call us on 01787 474040

Keep in touch

To keep in touch with our news and events, admission days and the latest information please ask to join our email list.

 Email enquiries@gosfieldschool.org.uk

Visit our website

For more detailed information including fee information, school transport options, exam results and inspection reports.

 visit www.gosfieldschool.org.uk

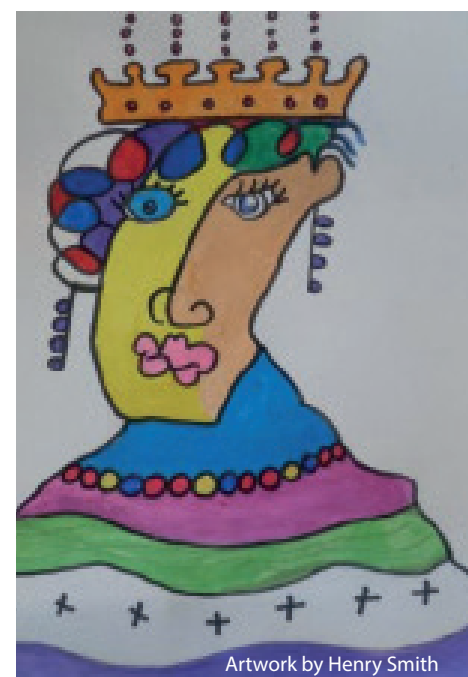
The information contained within this prospectus is correct at the time of going to print. Subjects offered and extra-curricular options can change and cannot be guaranteed. Please visit our website for the most up to date information including fees.



Artwork by George Paget



Artwork by Ava Sakal

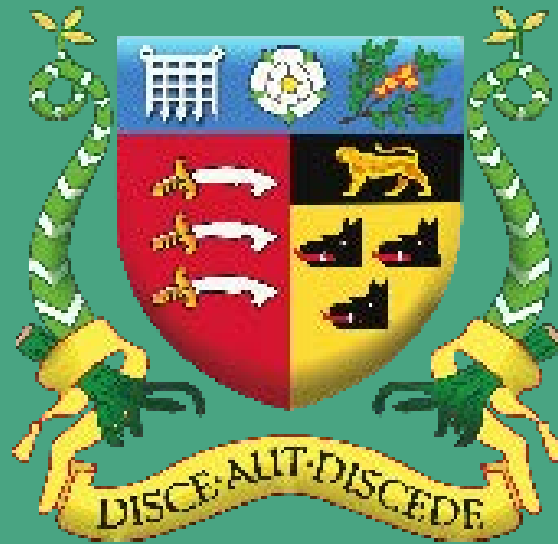


Artwork by Henry Smith



Artwork by Poppy Saunders

Artwork by Ryan Will



Gosfield School

NURSERY ■ PREP ■ SENIOR ■ SIXTH FORM

Contact us

Gosfield School, Cut Hedge Park,
Halstead Road, Gosfield, Essex CO9 1PF

☎ 01787 474040

💻 www.gosfieldschool.org.uk

✉ enquiries@gosfieldschool.org.uk



A not for profit charity. 100% of income is invested
for the benefit of the pupils of the school.
Registered Charity No: 310871.