




ESTABLISHED 1929

# Gosfield School

## Take a tour

We encourage all families to visit our school as often as possible. Our Open Mornings, held twice a year, provide you with the perfect opportunity to come and see us and meet staff and pupils. We can also arrange private tours and an appointment with the Principal during term time.

 Call us on 01787 474040

## Keep in touch

To keep in touch with our news and events, Taster Days and the latest admissions information please ask to join our email list.

 Email [admissions@gosfieldschool.org.uk](mailto:admissions@gosfieldschool.org.uk)

## Visit our website

For more detailed information including fee information, school transport options, exam results and inspection reports.

 visit [www.gosfieldschool.org.uk](http://www.gosfieldschool.org.uk)

Gosfield School, Cut Hedge Park,  
Halstead Road, Gosfield,  
Essex CO9 1PF

A not for profit charity. 100% of  
income is invested for the benefit  
of the pupils of the school.

Registered Charity No: 310871.



A co-educational independent  
through school



ESTABLISHED 1929

# Gosfield School

# YOUR GUIDE TO THE SIXTH FORM

A co-educational independent  
through school

# ACHIEVE THE BEST YOU CAN

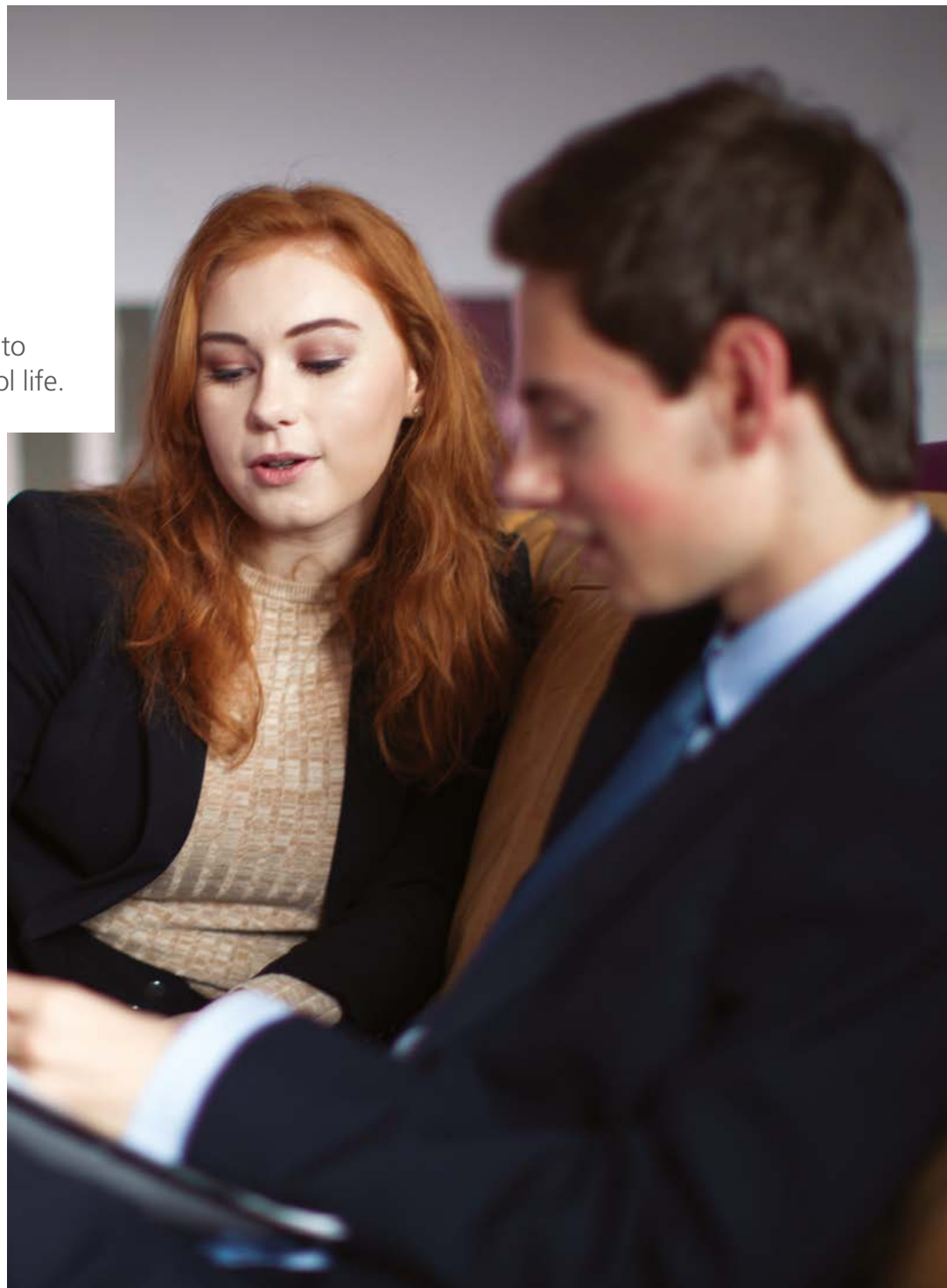
Gosfield School Sixth Form is a special place to study during the last two years of your school life.

With just 40 places available, it is big enough to ensure you have a full Sixth Form experience, but small enough to ensure you receive the academic and pastoral support you need to achieve your goals at this crucial time. Most importantly, our students consistently achieve their target grades for the universities and degree courses of their choice.

## A Levels are a partnership

We work in partnership with you to achieve the academic results you need as well as ensuring that we help you develop critical life skills and experiences to prepare you for the adult world.

Our teaching staff are passionate about what they do, they enjoy their areas of subject specialisation and they will share their enthusiasm with you.



## AT A GLANCE

- A history of excellent A Level results
- 100% pass rate for A Level 2018/19
- Consistent achievement of results needed for first choice of university places
- Small class sizes
- Dedicated sixth form centre
- Leadership opportunities
- A tailored extra-curricular programme

## IMPORTANT DATES FOR 2020 SIXTH FORM ENTRY

Here are some useful dates for your diary. Booking for Taster Days is essential as places are limited.

### Open Evening

**Date:** Thursday 5th November 2019  
**Time:** 6:30pm to 7:30pm

### Taster Day

**Date:** Friday 8th September 2020  
**Time:** 8.30am to 3.50pm

# ACADEMIC LIFE IN THE **SIXTH FORM**

As a Sixth Form student you are given a greater level of freedom to plan your studies, work independently, manage your time and stretch yourself academically. For some students this can be a challenging time, but we will fully support you in making this next step in your learning journey.

## UNIFORM REQUIREMENTS

Tailored business attire: trouser suits or dresses and skirts just above the knee or longer with a jacket for girls; suits and ties for boys. Hair must be kept smart; off the collar for boys. Boys may have well maintained facial hair or be clean shaven and girls should wear a minimal amount of make up. Girls must wear flat, low or medium heeled shoes only; high heels are not allowed. Boys' shoes should be smart and always clean and polished.

## ADMISSIONS PROCESS

Prospective students are invited to attend our Sixth Form Information Evening and Taster Day. Following these, candidates should apply using the Sixth Form Application Pack ensuring they submit by the deadline. Informal interviews for applicants will take place in February, including Scholarship interviews.

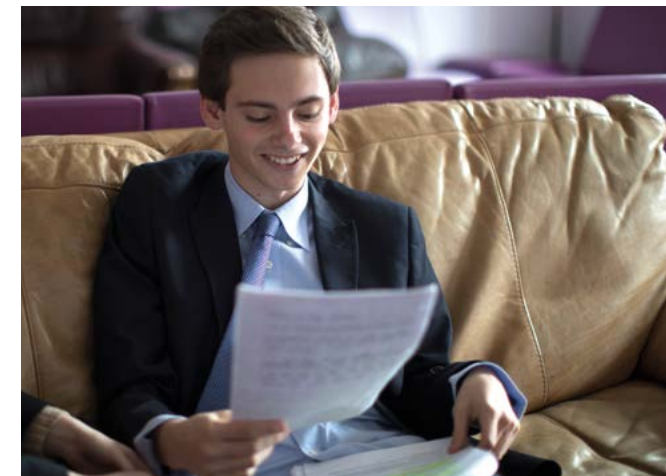
Places in our Sixth Form, or places on a waiting list for Sixth Form, are provisionally offered subject to appropriate attainment at GCSE; typically applicants would be expected to attain 5 GCSEs graded 9 to 4, preferably with grade 5s in the subjects they would like to study at A Level (or closely related subjects).

## Small Class Sizes

Our small class sizes create the perfect learning environment for our students. The intimate groups enable full participation, giving students the confidence to express their views openly and to debate constructively. This is excellent preparation for university lectures and seminars where active participation is expected.

## A dedicated Sixth Form Centre

To support you in working independently you will be able to enjoy our dedicated Sixth Form Centre which includes quiet study rooms, a spacious lounge and kitchen.



# PROVIDING THE RIGHT BALANCE TO **ACHIEVE THE BEST RESULT**

We are privileged to have the most outstanding facilities in our 100 acre parkland setting. Facilities include a Sports Hall, an all-weather sports surface and a cricket pitch and we offer a variety of orienteering and camp craft activities.

## Pastoral support

The personal and social welfare of each of our students is of paramount importance at Gosfield and our attention to pastoral care extends throughout Sixth Form life.

We have a dedicated Sixth Form pastoral team. With average tutor group sizes of about 15, staff develop excellent relationships with all their tutees and provide them with highly personalised advice and pastoral care.

## Extra curricular

We have an extremely active social and extra-curricular programme. Throughout the year students are required to help to organise charity events, such as the Open Air Cinema and the Senior Prom. Students are also encouraged to volunteer to assist with extra-curricular activities and sports fixtures for our younger pupils. We offer a range of extra-curricular activities which are tailored to Years 12 and 13 including Food Hygiene, First Aid and the Lake Experience. All Sixth Form students are ambassadors for the school, as Senior Prefects or House Captains and acting as role models for our younger pupils.

There are also opportunities for students to participate in the Duke of Edinburgh at Bronze, Silver and Gold level.

We believe strongly in a whole school ethos and many Sixth Form students choose to assist our younger Prep school pupils with reading and Forest School.

We encourage our Year 12 students to participate in Work Experience in the summer term, following their examinations.



## Planning for the future

By the time students reach 17 and 18 years old they become much clearer about their plans after Sixth Form with some choosing to go on to university and others deciding to embark upon their careers. Whichever route our students choose they are equipped with the strongest subject combinations and tutored to succeed. We support in terms of careers with guidance on UCAS and apprenticeships as well as exciting visit days looking beyond Sixth Form life.

## SUBJECTS OFFERED

We will aim to offer any subject for which there is sufficient demand. You have free choice of three or four subjects at AS Level or A Level.

### Subject Offered

Art & Design
Biology
Chemistry
Dance
Drama
Economics B
English Literature
French
Geography
History
Mathematics
Music
Physical Education
Physics
Product Design
Psychology
Sociology
Spanish